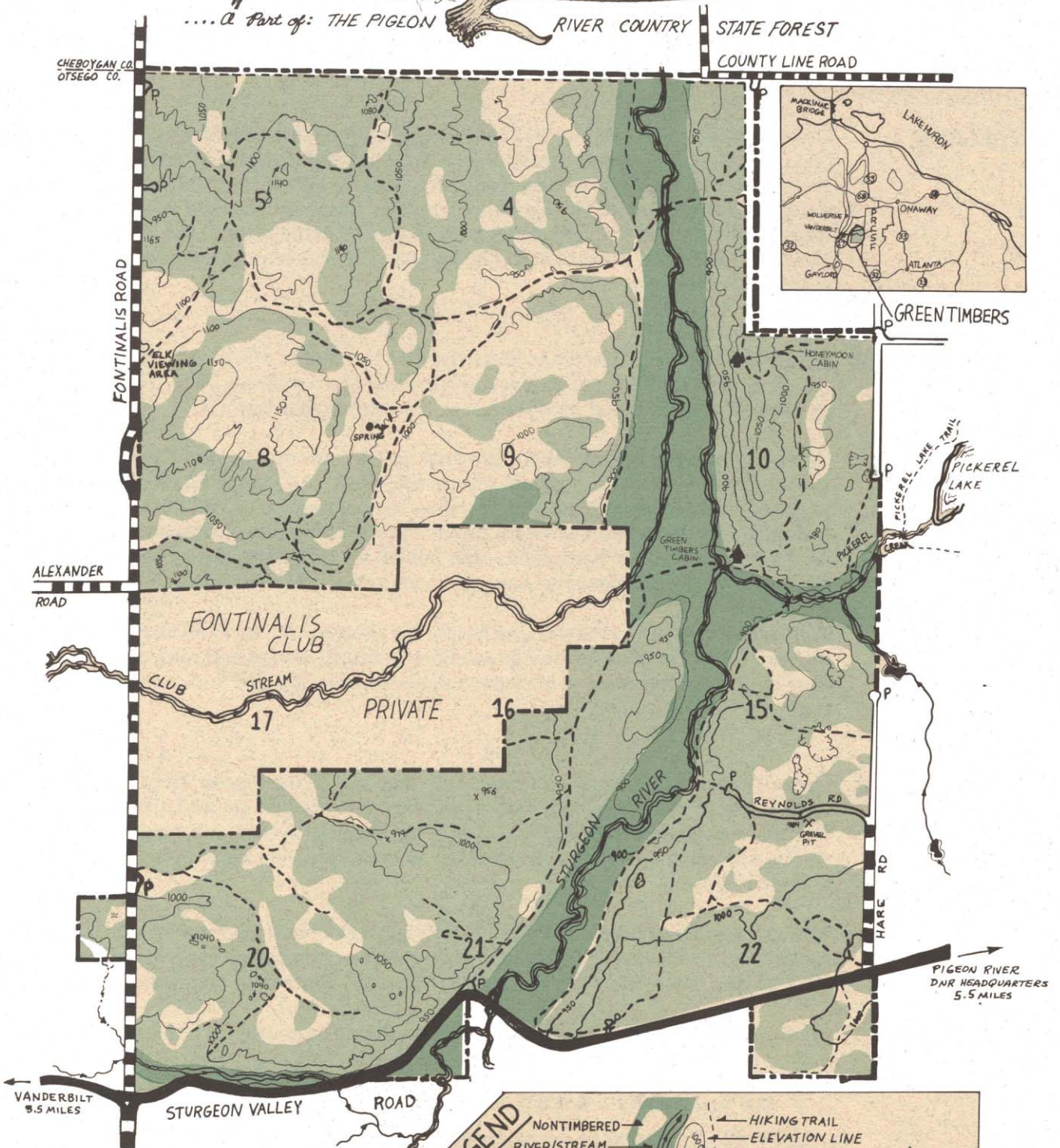
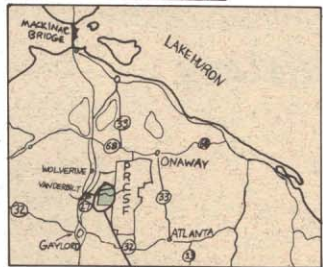


.... A Part of: THE PIGEON RIVER COUNTRY STATE FOREST



CHEBOYGAN CO.  
OTSEGO CO.

COUNTY LINE ROAD



GREEN TIMBERS

ALEXANDER ROAD

FONTINALIS CLUB

PRIVATE

CLUB STREAM

STURGEON RIVER

REYNOLDS RD

HARE RD

VANDERBILT 9.5 MILES

STURGEON VALLEY ROAD

PIGEON RIVER DNR HEADQUARTERS 5.5 MILES

**LEGEND**

- NONTIMBERED
- RIVER/STREAM
- LOW LAND FOREST
- UPLAND FOREST
- SHELTER
- BRIDGE
- GRAVEL ROAD
- PAVED ROAD
- HIKING TRAIL
- ELEVATION LINE
- PARKING
- DEPRESSION
- SAND ROAD
- GREENTIMBERS BOUNDRY

SCALE

0 1/2 1 mi

**Motorized Use Prohibited**  
Green Timbers is managed as a non-motorized recreational use area.  
Please journey under muscle power only.



Scenic vistas, prime wildlife habitat and over ten miles of Sturgeon River frontage dominate this 6,300 acre tract known as Green Timbers. Adopted as part of the Pigeon River Country State Forest (PRCSF), in 1982, Green Timbers is closed to all motor vehicles, including snowmobiles. This gives both people and wildlife a place without motors, and provides the visitor with a unique opportunity to enjoy some of northern Michigan's backcountry.

### ***HISTORY***

Green Timbers, so named in 1942 by Don McLouth of McLouth Steel, was developed and used as a hunting and fishing resort. Prior to the McLouth ownership, the southeastern portion was used as a recreational retreat by Titus Glen Phillips, while the north portion was owned by Cornwall Lumber Company. The land was extensively logged, burned, and then grazed by both sheep and cattle prior to the 1950's when McLouth purchased the property. The logging, fire and heavy grazing are still evident to the observant eye.

### ***TIMBER and WILDLIFE***

About 55% of Green Timbers is covered with a mixture of aspen, oak, northern hardwood, swamp conifers, red pine and white pine. The remaining 45% consists of open grasslands with scattered pine stumps or open grown hardwoods.

Green Timbers has been an important area for elk since the successful reintroduction of the species in 1918. The original release site is just 1 ½ miles north of the property. Large open expanses of grassland as well as annual seeding of rye, buckwheat, clover and alfalfa by the Wildlife Division provide prime habitat for elk. Swampland (lowland forest), aspen and hardwoods offer habitat for ruffed grouse, turkey, bear, white-tail deer, woodcock, snowshoe hare, and a variety of other wildlife.

The Sturgeon River watershed, including the Sturgeon River, Club Stream and Pickerel Creek, contains healthy populations of brook, brown and rainbow trout. Canoeing is not recommended due to numerous deadfalls and narrow spots in the river.

### ***RECREATION***

Green Timbers is managed as a special use area within the Pigeon River Country Management Unit. Special management includes prohibiting motorized recreational use and an emphasis on wildlife management (especially elk). Hiking, hunting, fishing, camping, cross-country skiing, mountain biking, horseback riding and wildlife viewing are pursued by visitors to Green Timbers.

The pathway system in Green Timbers basically consists of old two-track roads, which can range from a well established way to barely visible, overgrown trails mainly used by elk and deer. Recreationists are advised to always carry a map and compass.

Whatever your recreational interests may be, please be courteous to other visitors as well as to Green Timbers. *We hope you enjoy your visit.*

**Remember: Keep It Wild - Walk In !**

**Call 1-800-292-7800 to report motor vehicle use violations.**

June 2002